



NEREIDS

PHEROUSA

KK
SUPERYACHTS



















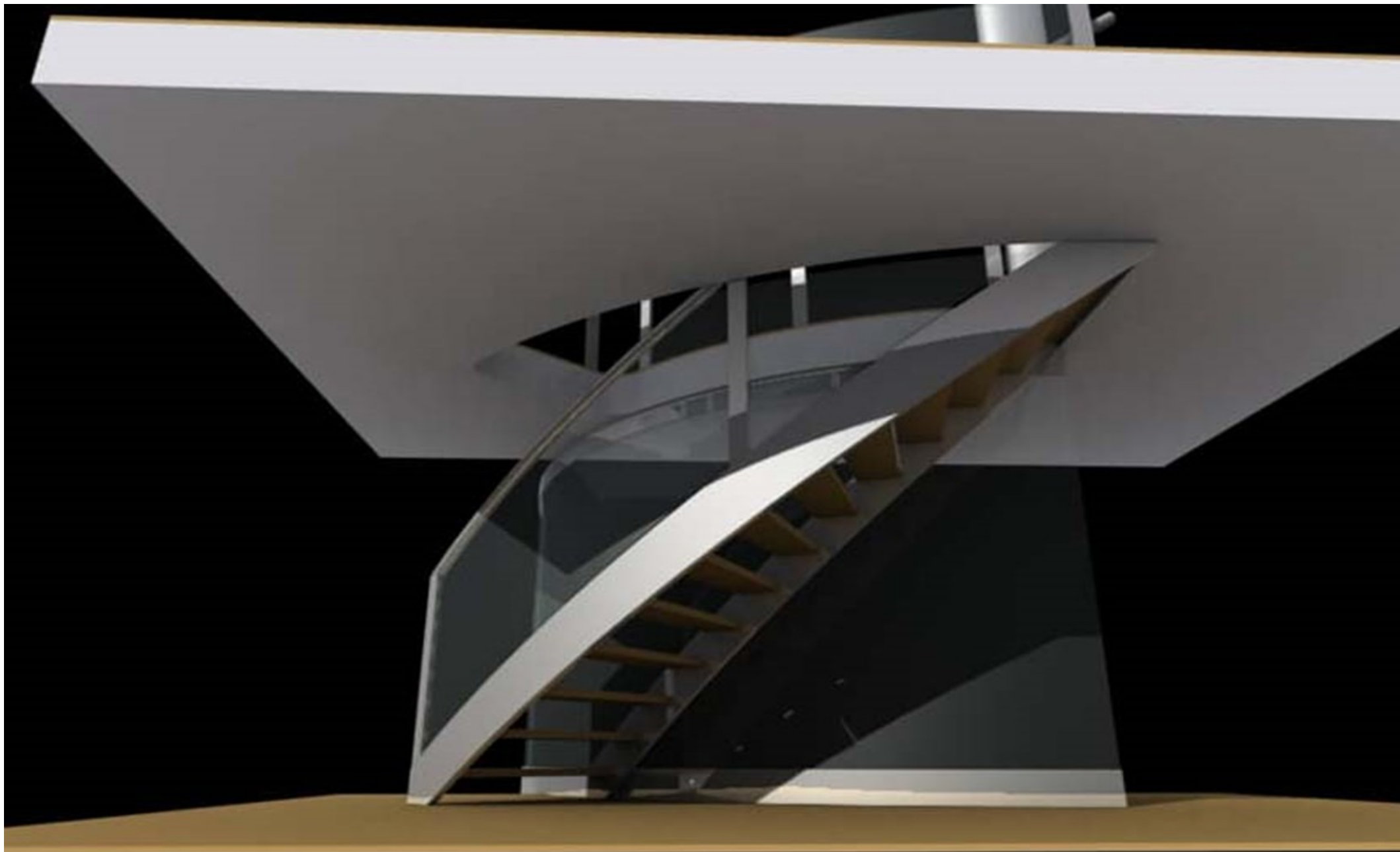


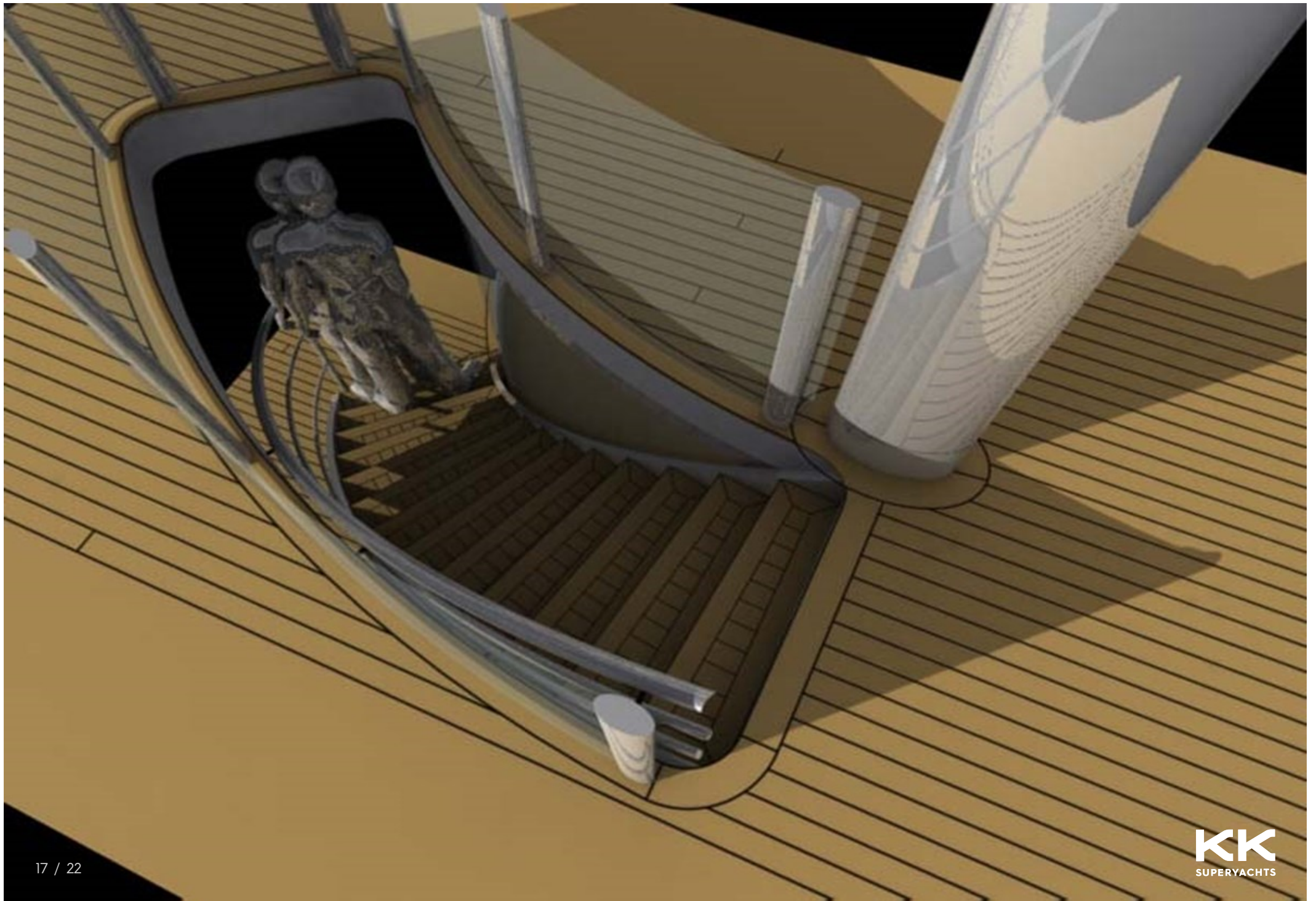


















MAIN CHARACTERISTICS

LENGTH:	220' 1" (67.07m)
BEAM:	12.1m / 40ft
DRAFT:	6' 7" (2m)
HULL:	Steel
GROSS TONNAGE:	1300 GT
MAX SPEED:	16 Knots
CRUISING SPEED:	12 Knots
INTERIOR DESIGNER	Alexandra Colins
YEAR:	2026

ASKING PRICE

Price on Application

GUEST ACCOMMODATION

SLEEPS:	5
---------	---



4 Quai Antoine 1er,
98000 Monaco

Tel: +377 97 70 41 22
info@kk-superyachts.com
kk-superyachts.com